

Hanerau Farms Limited



TE URI O HAU TANGATA WHENUA

IKHMG Presentation



Environmental Plan

Sustainable farming is the ultimate aim striking a balance between profitable farming and protecting and improving the environment

- Effluent control
- Soil testing
- Nutrient budgeting
- Stream samples
- Pest control
- Stream fencing and planting
- Bush area fencing
- Open farm planting
- Swamp areas fencing planting



Effluent Control

- **Work with the Northland Regional Council to maintain our pond system up to comply with our consent.**
- **Empty our ponds during the summer months onto different areas of the farm each year.**
- **Spray all weeds twice a year from around ponds.**
- **Empty stone traps every 2 months**
- **Check that the system is working well every month**
- **Develop a plan with Regional Council for the next 10 years**



Soil Testing

- Every one or two years soil samples are analyzed for changes.
- Samples take on areas that effluent is applied



Nutrient Budgeting

- Every year we get our Ballance agent to compile all the information into this report.
- With soil testing and nutrient budgeting we are able to work out our fertilizing requirements for the year.
- We have been able to drop our phosphate inputs to maintenance levels.



Stream Samples

- **Northland Regional Council takes samples each year from the Kaikowhiti stream.**
- **We comply with our discharge consent**



Pest Control

- **Our beef farm manager has a cyanide license who travel's to the dairy unit for control of possums, rats, stoats etc.**
- **A very important control when a planting programme is taking place**



UNIVERSITY OF FLORIDA

Stream Fencing and Planting

There has been a lot of stream planting but no fencing

The plan is to fence what has been planted and then carry on with area on map that need planting and fencing



Bush Area Fencing

Area 1, 2, 3 have been completed next two years we will have area 4 and 5 fenced

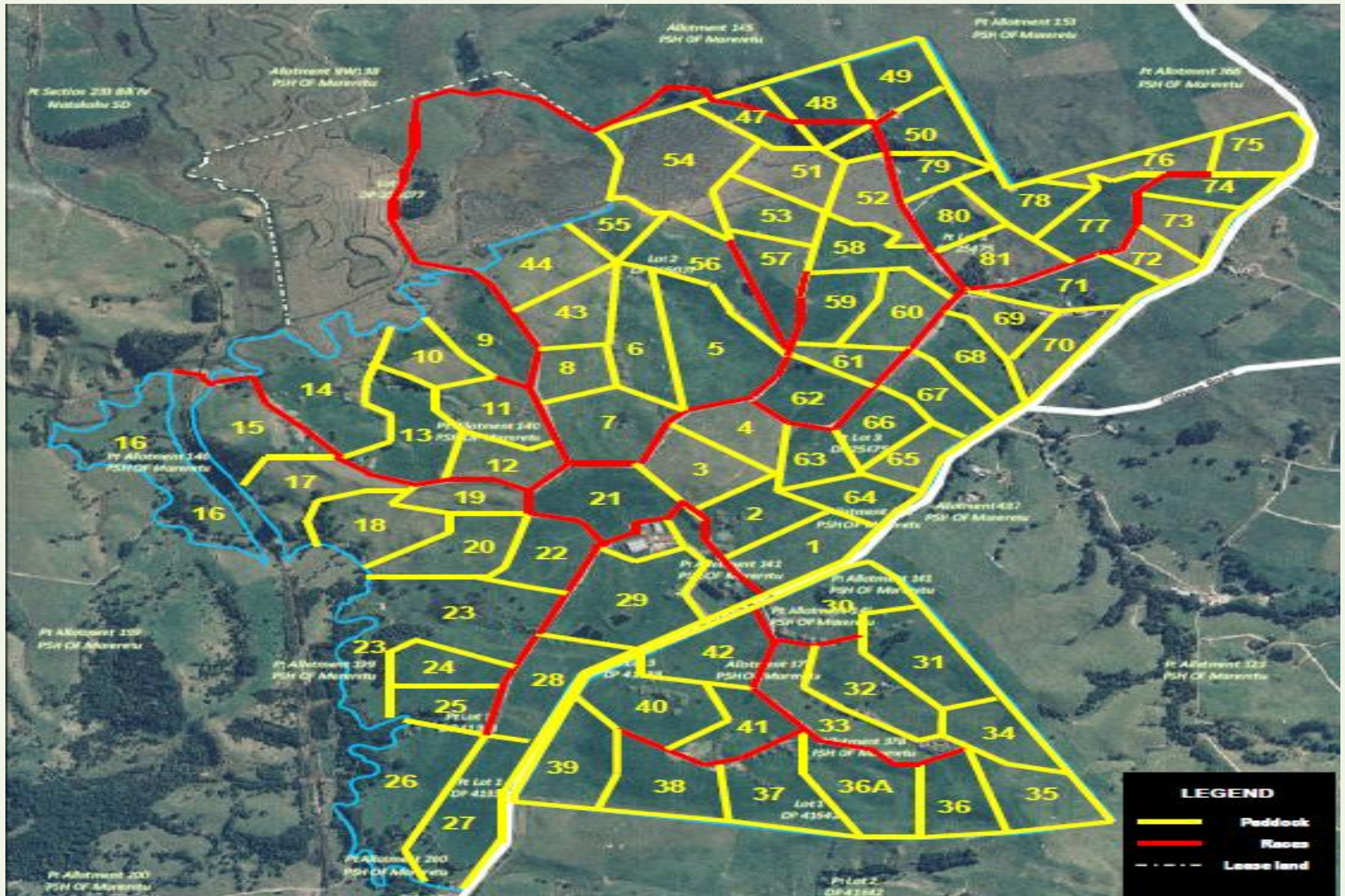


Open Farm Planting

This is nearly completed only areas in paddock No.47 and 58 to be planted



Open Farm Planting



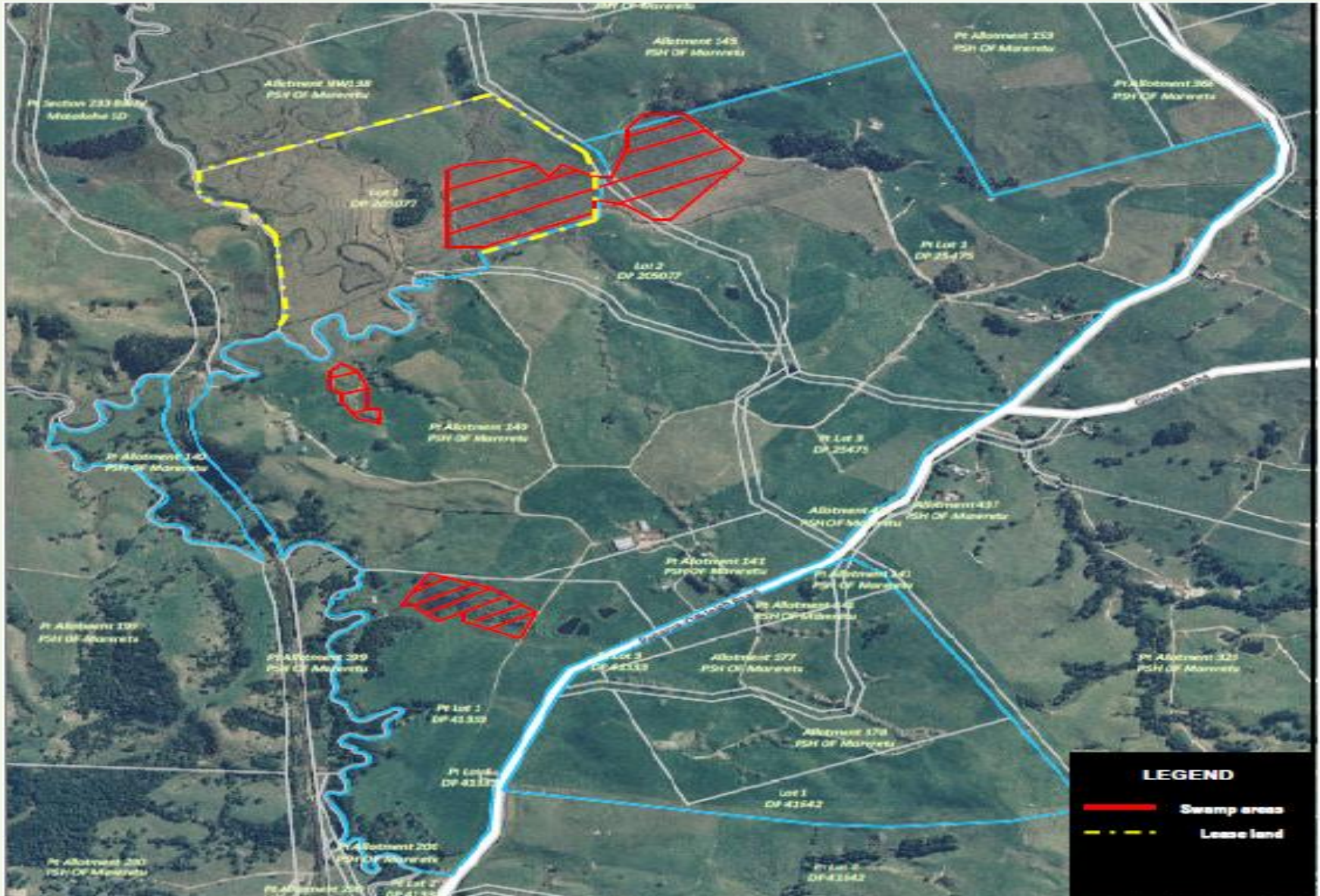


Swamp Areas (Fencing, Planting)

- The area indicated on the map needs to be retired from grazing and a large drain put around it. Fencing will not work with the large floods that cover these areas.
- A planting program of native trees and flax for these areas
- The lease area would have to have approval from the owners of the land.



Swamp Area Map





Environmental Plan

Our aim is to improve our quality of water runoff into our precious Kaipara Harbour.

- **Pest Control**
- **Foreshore fencing and planting**
- **Bush block fencing and restoration planting**
- **Open farm land planting**



Pest Control

- **Our beef farm manager, Bill Paikea has a cyanide license and regularly controls**
 - **Possums**
 - **Rats**
 - **Stoats**
 - **Swans**



Foreshore Fencing & Planting

A plan was developed for Northland Regional Council in 2008 for total foreshore that is owned and leased by Hanerau Farms.

An application to the council for funding for the fencing and planting each year. The reimbursement takes place once the stage has been completed and inspected. Native trees suitable for the coastline are used.

- Stage 1 and 2 were completed in 2008
- Stage 3 completed February 2011
- All fencing was approved by Regional Council
- Stage 4 foreshore fencing will be completed in 2012-13



ERINZ

Foreshore Fencing & Planting





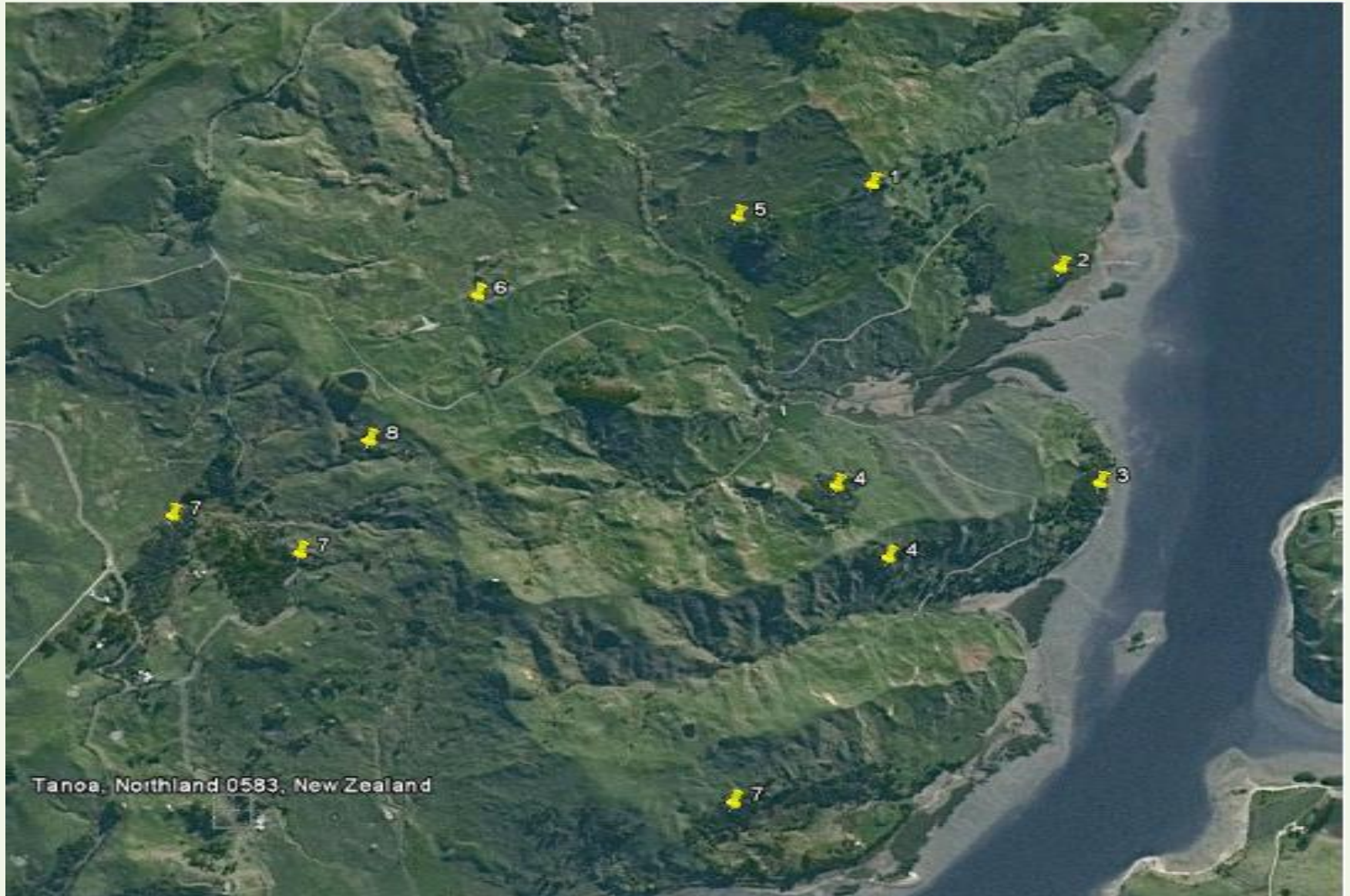
Bush Block Fencing/Restoration

I have set out a plan and time frame for the fencing and planting of all the bush areas on Hanerau Farms. In most of these areas there will be restoration planting of native trees as soon as the area is fenced.

- Stage 1 completed in 2008
- Stage 2 this area can be completed now that the foreshore fence is up 2012



Bush Block Fencing/Restoration





Open Farm Land Planting

An important part of the total plan. In this soil type the country has a lot of land movement that needs trees.

Planting these areas with willows and poplars is important, they also give very good shade for live stock. The plan is for 1 stage each year.

There has been stream and gully planting on Hanerau for a number of years but need's to be improved and include the other areas.



Open Farm Land Planting

